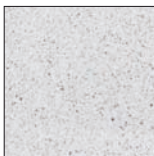
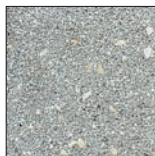


2051P



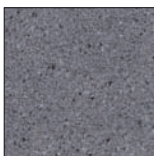
2052P



2053P



2055P



2057P

Garda

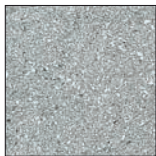
geschliffen-gestrahlt, gefast

Art.-Nr.	Typ		Format L/B/H mm	pro Palett Stk/m ² /kg	kg/Stk	CHF/m ²
61.2144	2051P	grau	400/400/28	80/12,80/980	12	61.50
61.2146	2051P	grau	600/400/28	52/12,48/900	17	61.50
61.2244	2052P	weiss	400/400/28	82/12,80/980	12	69.00
61.2246	2052P	weiss	600/400/28	52/12,48/900	17	69.00
61.2344	2053P	grau-gelb	400/400/28	80/12,80/980	12	61.50
61.2346	2053P	grau-gelb	600/400/28	52/12,48/900	17	61.50
61.2544	2055P	gelb	400/400/28	80/12,80/980	12	69.00
61.2546	2055P	gelb	600/400/28	52/12,48/900	17	69.00
61.2744	2057P	anthrazit	400/400/28	80/12,80/980	12	74.00
61.2746	2057P	anthrazit	600/400/28	52/12,48/900	17	74.00

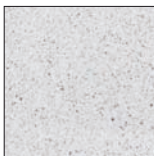
Zuschlag Imprägnierung

6.00

Gehwegplatten Garda geschliffen und Blockstufen auf Anfrage.



2051P



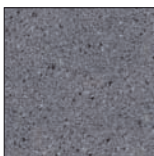
2052P



2053P



2055P



2057P

Garda Grossformat

geschliffen-gestrahlt, vollkantig

Art.-Nr.	Typ		Format L/B/H mm	pro Palett Stk/m ² /kg	kg/Stk	CHF/m ²
61.3144	2051P	grau	600/600/35	32/11,52/1080	33	82.00
61.3146	2051P	grau	1200/400/35	20/ 9,57/ 920	45	82.00
61.3244	2052P	weiss	600/600/35	32/11,52/1080	33	91.50
61.3246	2052P	weiss	1200/400/35	20/ 9,57/ 920	45	91.50
61.3344	2053P	grau-gelb	600/600/35	32/11,52/1080	33	82.00
61.3346	2053P	grau-gelb	1200/400/35	20/ 9,57/ 920	45	82.00
61.3544	2055P	gelb	600/600/35	32/11,52/1080	33	91.50
61.3546	2055P	gelb	1200/400/35	20/ 9,57/ 920	45	91.50
61.3744	2057P	anthrazit	600/600/35	32/11,52/1080	33	96.50
61.3746	2057P	anthrazit	1200/400/35	20/ 9,57/ 920	45	96.50

Zuschlag Imprägnierung

6.00

Gehwegplatten Garda Grossformat dürfen nur in Splitt verlegt werden.